



*More Stars, Safer Cars*

## FACT SHEET

### MAHINDRA - XUV 400 EV

Tested Year: 2024



Adult Occupant Protection (AOP)  
**30.38/ 32**

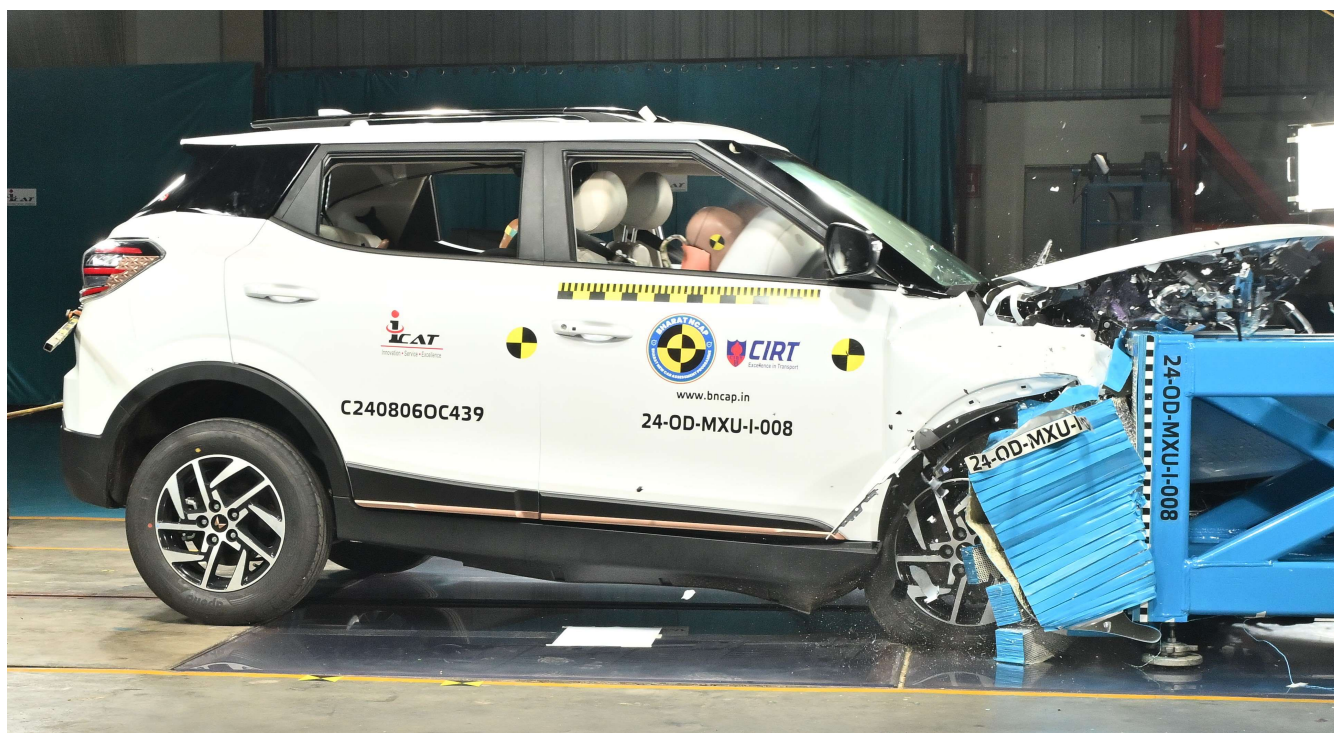


Child Occupant Protection (COP)  
**43.00/ 49**

### SPECIFICATIONS

Tested Vehicle Model & Variant	MAHINDRA - XUV 400 EV - EC L, EL LH(O)
Body Type	SUV (2 rows)
Gross Vehicle Weight (kg)	1856 kg
Country of Origin	India
Year of Publication	2024
Ratings Applicability	To the variants listed in the annexure.

## VEHICLE UNDER TEST



## SAFETY EQUIPMENT

	DRIVER	PASSENGER	REAR
<b>FRONTAL CRASH PROTECTION</b>			
Frontal airbag	YES - STANDARD	YES - STANDARD	NOT APPLICABLE
Belt pretensioner	YES - STANDARD	YES - STANDARD	NOT AVAILABLE
Belt Load-limiter	YES - STANDARD	YES - STANDARD	NOT AVAILABLE
Knee airbag	NOT AVAILABLE	NOT AVAILABLE	NOT APPLICABLE
<b>SIDE CRASH PROTECTION</b>			
Side head curtain airbag	NO - OPTIONAL	NO - OPTIONAL	NO - OPTIONAL
Side head (thorax head) airbag	NOT AVAILABLE	NOT AVAILABLE	NOT AVAILABLE
Side chest airbag	NO - OPTIONAL	NO - OPTIONAL	NOT AVAILABLE
Side pelvis airbag	NO - OPTIONAL	NO - OPTIONAL	NOT AVAILABLE
<b>CHILD PROTECTION</b>			
ISOFIX	NOT APPLICABLE	NOT AVAILABLE	YES - OUTBOARD SEATS
Integrated CRS	NOT APPLICABLE	NOT AVAILABLE	NOT AVAILABLE
Airbag cut-off switch	NOT APPLICABLE	YES - MANUAL	NOT APPLICABLE
<b>SAFETY ASSIST TECHNOLOGIES</b>			
ESC (UN GTR No.8 / UNECE R140 / AIS-133)	YES - STANDARD		
Pedestrian protection (AIS-100)	YES - STANDARD		
Seat Belt Reminder (SBR) (AIS-145)	YES - STANDARD	YES - STANDARD	NOT AVAILABLE

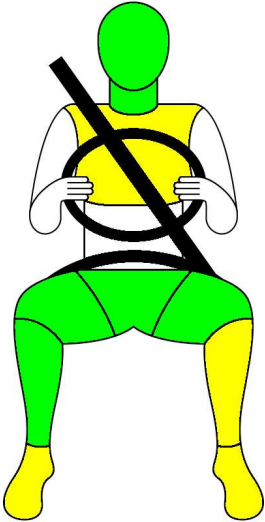
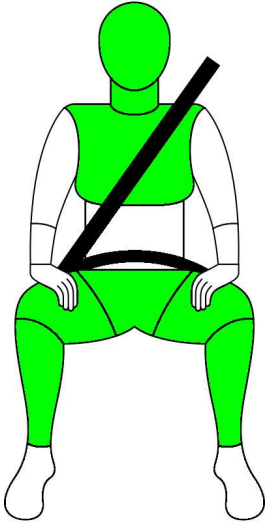
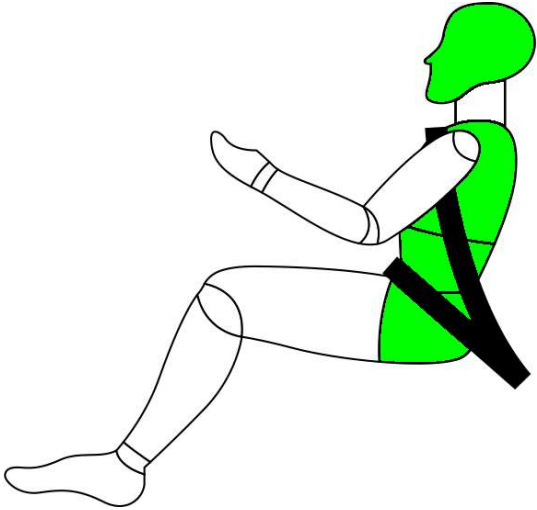
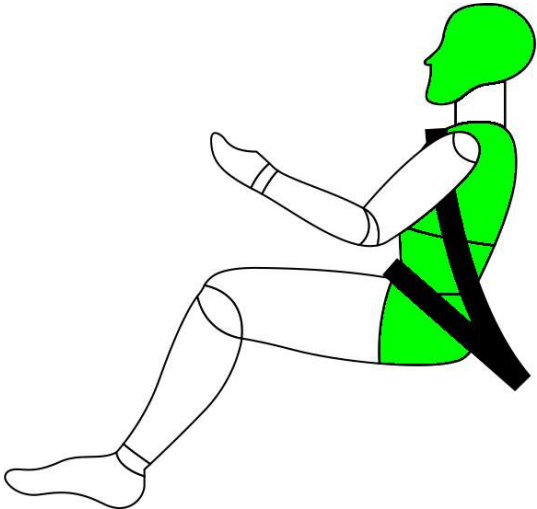
ADULT OCCUPANT PROTECTION

30.38/ 32.00

SUMMARY OF SCORES

Frontal Offset Deformable Barrier Test: 14.38 out of 16.00

Side Movable Deformable Barrier Test: 16.00 out of 16.00

Frontal offset deformable barrier test		Side movable deformable barrier test	
			
<div><div></div> GOOD</div> <div><div></div> ADEQUATE</div> <div><div></div> MARGINAL</div> <div><div></div> WEAK</div> <div><div></div> POOR</div>		Side pole impact test (Pole)	OK
			

**CHILD OCCUPANT PROTECTION**
**43.00/ 49.00**
**WITH USE OF CHILD RESTRAINT SYSTEMS IN DYNAMIC TEST**

 Dynamic score 24.00  
(max. 24.00)

 CRS installation score 12.00  
(max. 12.00)

 Vehicle assessment score 7.00  
(max. 13.00)

	Child restraint	Dynamic score	CRS type	Adjust	Position
18-month-old child	Britax Roemer Dualfix Pro M	Front Side 8.00 (8 max) 4.00 (4 max)	i-SIZE	ISOFIX / LEG	RWF
3 years old child	Britax Roemer Dualfix Pro M	Front Side 8.00 (8 max) 4.00 (4 max)	i-SIZE	ISOFIX / LEG	RWF

	Front passenger	2nd row outboard	2nd row center
ISOFIX	NOT AVAILABLE	YES - STANDARD	NOT AVAILABLE
i-Size	NOT AVAILABLE	YES - STANDARD	NOT AVAILABLE
Integrated CRS	NOT AVAILABLE	NOT AVAILABLE	NOT AVAILABLE

**CRS INSTALLATION ASSESSMENT**
● PASS ● FAIL ● EXEMPT

REFERENCE LIST		1ST ROW	2ND ROW			3RD ROW		
		LEFT	LEFT	CENTER	RIGHT	LEFT	CENTER	RIGHT
Group 0+	Peg Perego Viaggio Switchable (BELTED)	●	●	●	●	N/A	N/A	N/A
Group 0+	Roemer Baby Safe (ISOFIX/LEG)	N/A	●	N/A	●	N/A	N/A	N/A
Group 0+	Bébé Comfort Stry Fix / Maxi Cosi Citi (BELTED)	●	●	●	●	N/A	N/A	N/A
Group I	Peg Perego Viaggio Switchable FWF (BELTED)	●	●	●	●	N/A	N/A	N/A
Group I	Graco Cadeira Nautilus FWF (BELTED)	●	●	●	●	N/A	N/A	N/A
Group II/III	Cybex Solution M-Fix (BELTED)	●	●	●	●	N/A	N/A	N/A
Group II/III	Graco Cadeira Nautilus (BELTED)	●	●	●	●	N/A	N/A	N/A
<b>MANUFACTURER</b>								
Q1.5	Britax Roemer Dualfix Pro M i-SIZE (ISOFIX / LEG)	N/A	●	N/A	●	N/A	N/A	N/A
Q3	Britax Roemer Dualfix Pro M i-SIZE (ISOFIX / LEG)	N/A	●	N/A	●	N/A	N/A	N/A


**DISCLAIMER:**

The **Safety Star Rating** indicated in this fact sheet is based upon the assessment carried out by the Designated Agency for the new car model of referred make as per Automotive Industry Standard (AIS)- 197, on the basis tests carried out by the authorized test agency specified in Rule 126 of Central Motor Vehicle Rules 1989 and the report submitted along with the declarations given by the Vehicle Manufacturer.

The purpose the fact sheet is providing information for prospective buyer of the vehicle on its safety performance in standard test conditions for making the informed choice. The fact sheet summary is applicable only for the specified variant of the vehicle model (listed as in Annexure) sold or intended to be sold by the vehicle manufacturer.

In case of any dispute the Pune Court shall have the Jurisdiction to deal with legal case.

The variants to which the model’s rating applies.  
(As per the provision of AIS-197 Version- September 2023 Cl. 8.0)

Sr No.	XUV 400EV Family	Ratings Applicability	Month & Year of Assessment
1	EC L		October 2024
2	EC L (O)		
3	EL LL		
4	EL LL(O)		
5	EL LH		
6	EL LH(O)		
7	EL FH		
8	EL FH(O)		

Disclaimer: The vehicle model offers the Side Head Protection System (curtain airbags) as a Standard Fitment on select variant(s) of the vehicle model. It is recommended to make an informed choice while selecting the variant before making a buying decision.

\*\*\*