

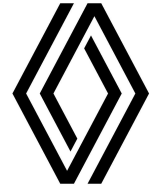


*More Stars, Safer Cars*

## FACT SHEET

### RENAULT - DUSTER

Tested Year: 2026



Adult Occupant Protection (AOP)  
30.49/ 32

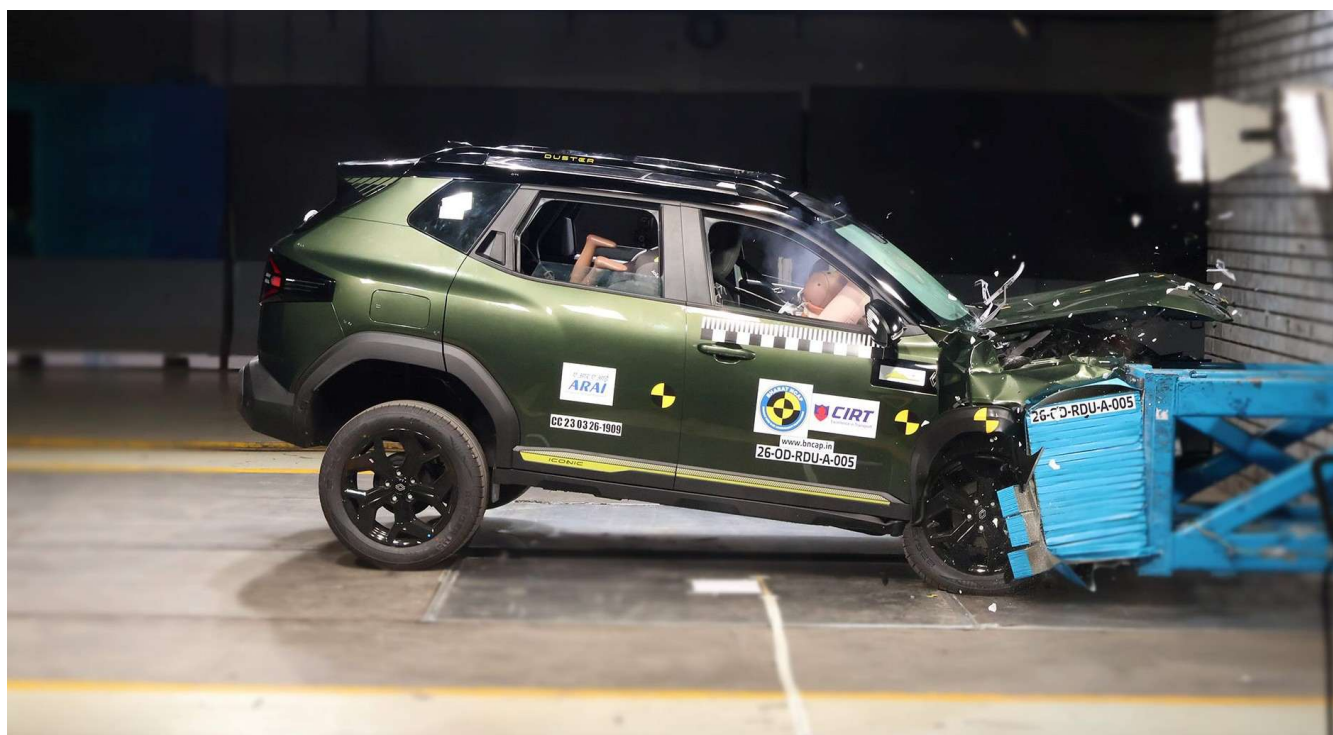


Child Occupant Protection (COP)  
45.00/ 49

### SPECIFICATIONS

Tested Vehicle Model & Variant	RENAULT - DUSTER - EVOLUTION (1.3L MT), TECHNO (1.3L DCT) & ICONIC (1.3L MT)
Body Type	SUV (2 rows)
Crash Test Weight (kg)	1621 kg
Country of Origin	India
Year of Publication	2026
Ratings Applicability	To the variants listed in the annexure.

VEHICLE UNDER TEST



SAFETY EQUIPMENT

	DRIVER	PASSENGER	REAR
<b>FRONTAL CRASH PROTECTION</b>			
Frontal airbag	YES - STANDARD	YES - STANDARD	NOT APPLICABLE
Belt pretensioner	YES - STANDARD	YES - STANDARD	NOT AVAILABLE
Belt Load-limiter	YES - STANDARD	YES - STANDARD	NOT AVAILABLE
Knee airbag	NOT AVAILABLE	NOT AVAILABLE	NOT APPLICABLE
<b>SIDE CRASH PROTECTION</b>			
Side head curtain airbag	YES - STANDARD	YES - STANDARD	YES - STANDARD
Side head (thorax head) airbag	NOT AVAILABLE	NOT AVAILABLE	NOT AVAILABLE
Side chest airbag	YES - STANDARD	YES - STANDARD	NOT AVAILABLE
Side pelvis airbag	NOT AVAILABLE	NOT AVAILABLE	NOT AVAILABLE
<b>CHILD PROTECTION</b>			
ISOFIX	NOT APPLICABLE	NOT AVAILABLE	YES - OUTBOARD SEATS
Integrated CRS	NOT APPLICABLE	NOT AVAILABLE	NOT AVAILABLE
Airbag cut-off switch	NOT APPLICABLE	YES - MANUAL	NOT APPLICABLE
<b>SAFETY ASSIST TECHNOLOGIES</b>			
ESC (UN GTR No.8 / UNECE R140 / AIS-133)	YES - STANDARD		
Pedestrian protection (AIS-100)	YES - STANDARD		
Seat Belt Reminder (SBR) (AIS-145)	YES - STANDARD	YES - STANDARD	YES - STANDARD

ADULT OCCUPANT PROTECTION

30.49/ 32.00

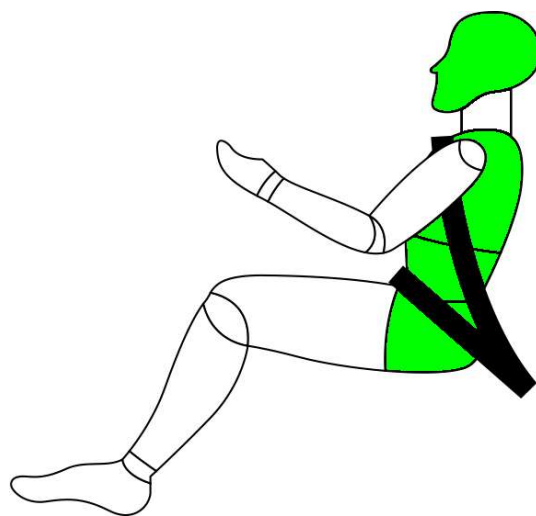
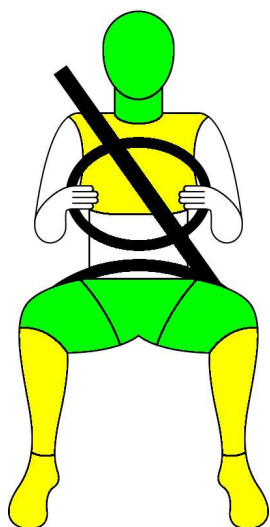
SUMMARY OF SCORES

Frontal Offset Deformable Barrier Test: 14.49 out of 16.00

Side Movable Deformable Barrier Test: 16.00 out of 16.00

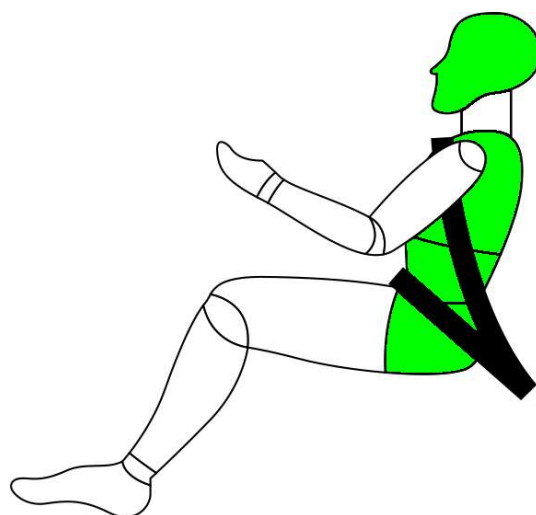
Frontal offset deformable barrier test

Side movable deformable barrier test



Side pole impact test (Pole)

OK



- GOOD
- ADEQUATE
- MARGINAL
- WEAK
- POOR

**CHILD OCCUPANT PROTECTION**

**45.00/ 49.00**

**WITH USE OF CHILD RESTRAINT SYSTEMS IN DYNAMIC TEST**

Dynamic score 24.00  
(max. 24.00)

CRS installation score 12.00  
(max. 12.00)

Vehicle assessment score 9.00  
(max. 13.00)

	Child restraint	Dynamic score	CRS type	Adjust	Position
18-month-old child	Joie i-Spin 360	Front 8.00 (8 max) Side 4.00 (4 max)	i-SIZE	ISOFIX / LEG	RWF
3 years old child	Joie i-Spin 360	Front 8.00 (8 max) Side 4.00 (4 max)	i-SIZE	ISOFIX / LEG	RWF

	Front passenger	2nd row outboard	2nd row center
ISOFIX	NOT AVAILABLE	YES - STANDARD	NOT AVAILABLE
i-Size	NOT AVAILABLE	YES - STANDARD	NOT AVAILABLE
Integrated CRS	NOT AVAILABLE	NOT AVAILABLE	NOT AVAILABLE

**CRS INSTALLATION ASSESSMENT**

● PASS ● FAIL ● EXEMPT

REFERENCE LIST		1ST ROW	2ND ROW			3RD ROW		
		LEFT	LEFT	CENTER	RIGHT	LEFT	CENTER	RIGHT
Group 0+	Peg Perego Viaggio Switchable (BELTED)	●	●	●	●	N/A	N/A	N/A
Group 0+	Roemer Baby Safe (ISOFIX/LEG)	N/A	●	N/A	●	N/A	N/A	N/A
Group 0+	Bébé Comfort Stry Fix / Maxi Cosi Citi (BELTED)	●	●	●	●	N/A	N/A	N/A
Group I	Peg Perego Viaggio Switchable FWF (BELTED)	●	●	●	●	N/A	N/A	N/A
Group I	Graco Cadeira Nautilus FWF (BELTED)	●	●	●	●	N/A	N/A	N/A
Group II/III	Cybex Solution M-Fix (BELTED)	●	●	●	●	N/A	N/A	N/A
Group II/III	Graco Cadeira Nautilus (BELTED)	●	●	●	●	N/A	N/A	N/A
<b>MANUFACTURER</b>								
Q1.5	Joie i-Spin 360 i-SIZE (ISOFIX / LEG)	N/A	●	N/A	●	N/A	N/A	N/A
Q3	Joie i-Spin 360 i-SIZE (ISOFIX / LEG)	N/A	●	N/A	●	N/A	N/A	N/A


**DISCLAIMER:**

The **Safety Star Rating** indicated in this fact sheet is based upon the assessment carried out by the Designated Agency for the new car model of referred make as per Automotive Industry Standard (AIS)- 197, on the basis tests carried out by the authorized test agency specified in Rule 126 of Central Motor Vehicle Rules 1989 and the report submitted along with the declarations given by the Vehicle Manufacturer.

The purpose the fact sheet is providing information for prospective buyer of the vehicle on its safety performance in standard test conditions for making the informed choice. The fact sheet summary is applicable only for the specified variant of the vehicle model (listed as in Annexure) sold or intended to be sold by the vehicle manufacturer.

In case of any dispute the Pune Court shall have the Jurisdiction to deal with legal case.

**The variants to which the model's rating applies.**  
*(As per the provision of AIS-197 Version- September 2023 Cl. 8.0)*

Sr No.	Duster			Ratings Applicability	Month & Year of Assessment
	1L Turbo	1.3L Turbo	1.3L Turbo DCT		
1	Authentic	Evolution	Techno		March 2026
2	Authentic+	Techno	Techno+		
3	Evolution	Techno+	Iconic		
4	Techno	Iconic	---		
5	Techno+	---	---		

*Disclaimer: The vehicle model offers the Safety Assist Technologies (SAT) namely the ESC (Electronic Stability Control), Side Head Protection System (curtain airbags), Pedestrian Protection System & Seat Belt Reminders (SBR) as a Standard Fitment across all the variants. It is recommended to make an informed choice while selecting the variant before making a buying decision*

\*\*\*